

UBio-X Face Premium

Walk-Through Method
8" Premium Face Recognition System



Support multiple authentication method including face, fingerprint, mobile key and QR code



Integrated security solution according to the contactless trend



Enhanced security and data encryption

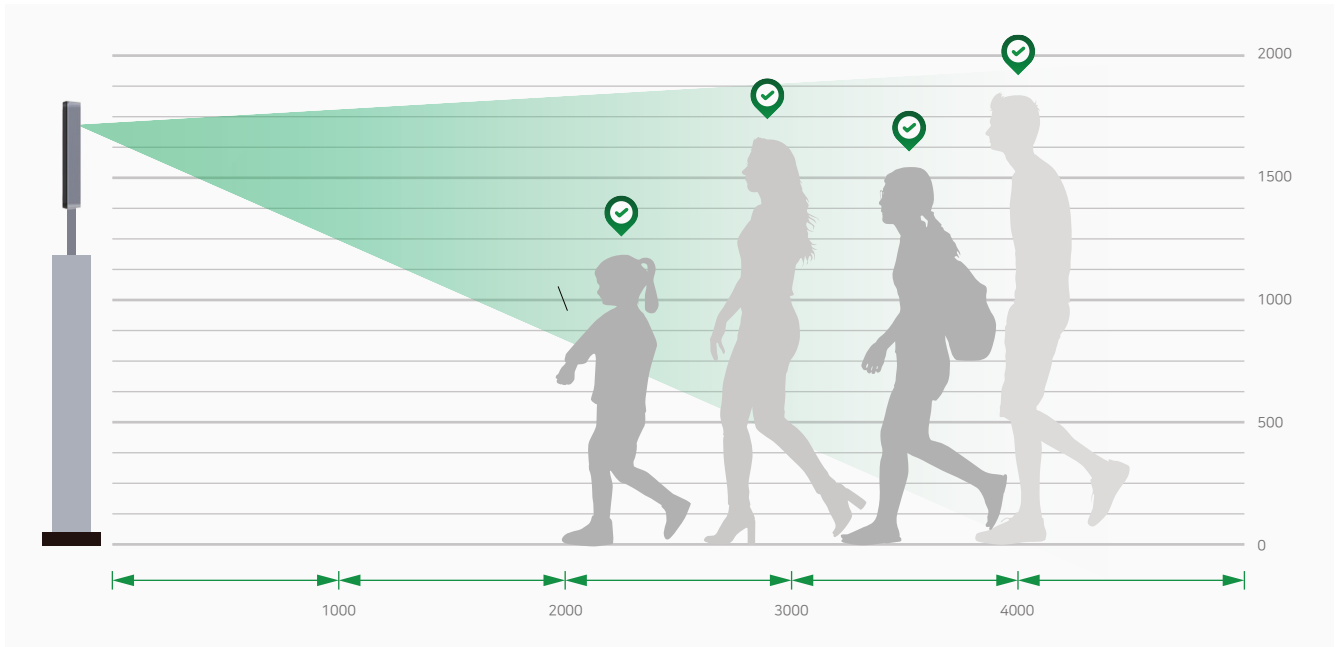


High performance device equipped latest face recognition algorithm

UNION
COMMUNITY

High Performance Device Equipped Latest Face Recognition Algorithm

UBio-X Face Premium is equipped with a high-performance face recognition algorithm to fast and recognize the user's face accurately even from a distance of up to 4m, and up to 4 people can be authenticated at same time.



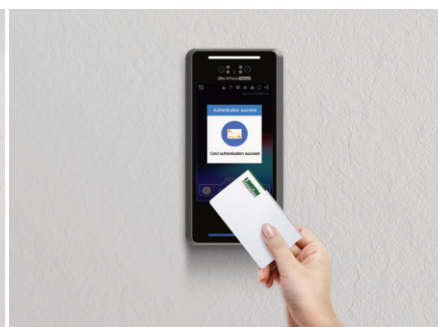
Support Multiple Authentication Method

By grafting the UBio-X FQR authentication sensor, various authentication methods such as face, fingerprint, card, mobile key, QR code, and card have been implemented.

It is able to select and use the authentication method according to the customer's needs.



FACE



CARD



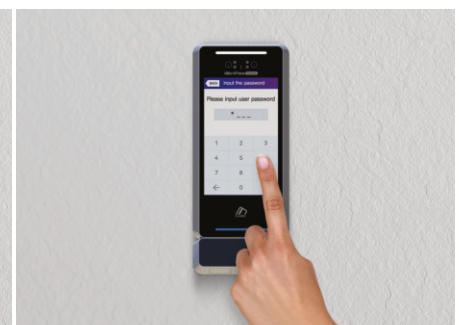
MOBILE KEY



FINGERPRINT



QR Code



PASSWORD



Integrated Security Solution by Contactless Trend

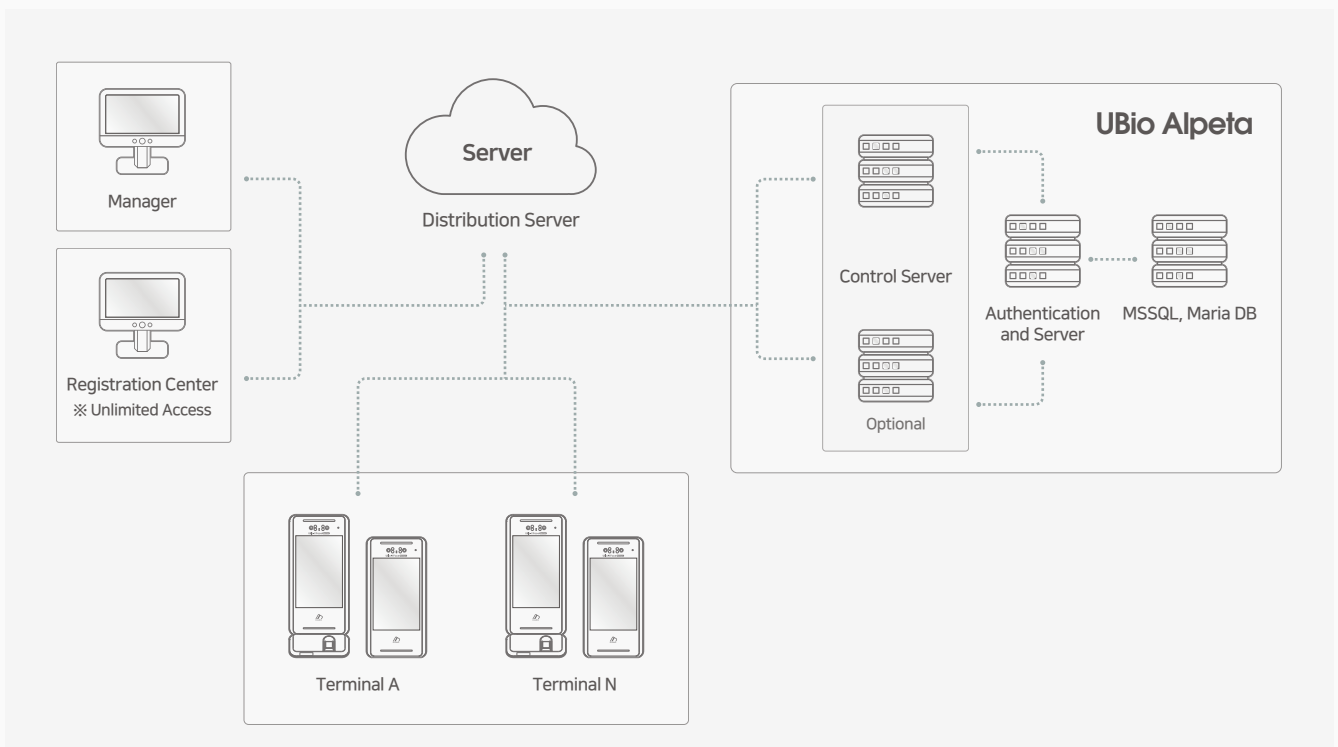
According to contactless solution such as mask detection (3 levels), thermal detection, contactless visitor & event management and remote user registration can avoid infectious. Also, It is possible to use by integrating with a variety of systems like Video surveillance, access control and Time & Attendance management.





Enhanced Security and Data Encryption

All biometric information is protected based on a technology that encrypts and saves as the minutia point used in the algorithm engine without saving the original image.

SYSTEM CONFIGURATIONS



SPECIFICATION

Model Name		Ubio-X Face Premium	Ubio-X Face Premium FQR	
Model Image				
General	CPU	cortex A53 Quad Core 1.8GHz	cortex A53 Quad Core 1.8GHz	
	NPU	O (2.5 TOPS)	O (2.5 TOPS)	
	OS	Android 11	Android 11	
	MEMORY	Flash	16G eMMC	16G eMMC
		RAM	4G (LPDDR4)	4G (LPDDR4)
	LCD	type	8" (TFT IPS LCD)	8" (TFT IPS LCD)
		Resolution	800 X 1280	800 X 1280
	Speaker	Audio Codec 1W	Audio Codec 1W	
	MIC	Waterproof MIC	Waterproof MIC	
	Operating Temperature	-20°C~60°C	-20°C~60°C	
	Operating Humidity	0% ~ 90% non-condensing	0% ~ 90% non-condensing	
	Weight	980g	1280g	
	Dimension (WxHxD mm)	143.3 X 289.5 X 23.8	143.3 X 289.5 X 23.8	
	Temper	O	O	
IP Rating	IP55	IP55		
Certificates	KC / CE / FCC	KC / CE / FCC		
Biometrics	Face	Recognition Distance	0.5M~4M	0.5M~4M
		Matching Speed	<1 sec	<1 sec
		Liveness Detection	O	O
	FingerPrint	Template	-	1000
		Extractor / Matcher	-	MINEX CERTIFIED AND COMPLIANT
		Image Dimension	-	256*292(12.6 *14.8 mm)
		Resolution	-	500 DPI
		Certification	-	Virdi, ISO 1974-2, ANSI-378
Liveness Detection	50 cm	50 cm		
RF	RF Read Range	EM	50 cm	50 cm
		Smart Card	50 cm	50 cm
		DESFIRE EV1 / EV2 / EV3	45 cm	45 cm
		FELICA	-	-
	RF Option	125KHz EM	All in One	All in One
		HID Prox		
		13.56MHz Smart Card		
		Mifare (Plus)		
		Felica		
		ISO14443 A/B		
		ISO 15693		
		DESFIRE EV1 / EV2 / EV3		
	HID iCLASS SE/SR/Seos			
	Mobile Card	NFC	Support	Support
BLE		Support	Support	
QR	Image Sensor	-	640X480	
	Symbolologies	-	1D/2D	
	FOV (H x V)	-	42° x 31.5°	
Capacity	Face (Based on one face Template per User)	1:N	30,000 (50,000 Option)	30,000 (50,000 Option)
		1:1	100,000	100,000
		TAR	97.99%	97.99%
		FAR	-	-
	FingerPrint (Based on two FingerPrint Template per User)	1:N	-	50,000
		1:1	-	500,000
		TAR	-	99.9%
		FAR	-	0.000001%
Event Log	10,000,000	10,000,000		
Picture Log	20,000	20,000		
Interface	ethernet	10/100M 1Port	10/100M 1Port	
	RS-485	1 Port	1 Port	
	RS-232	2 Port	2 Port	
	Wiegand	IN/OUT 1Port	IN/OUT 1Port	
	Relay	2	2	
	USB	USB2.0	Host 1 Port	Host 1 Port
		USB3.0	OTG 1 Port (C Type)	OTG 1 Port (C Type)
Power	Voltage	DC 15V~24V	DC 15V~24V	
	Current	Max 1.5A @DC15V	Max 1.5A @DC15V	